

GSMRM **ZEPHYR**

Edition 2012

Winter-Spring

GENERAL MANAGER'S REPORT

Hello and greetings from the General Manager! We have had another fine year at GSMRM with progress on several fronts. First, after successful relocation of the Tom Snyder layout to New Jersey Hi-Railers (see below), we are working on plans for the inside remodel. The members pulled together and hammered out a plan which includes new carpet, sheet rocking all the walls, a janitorial closet, and switching the board room with the library, so the library will be larger and user friendly. We have gotten all of the permissions from parks and the members and I am now working on the permits needed to do the job. We hope to start on it soon and complete by winter if possible. There are some details to work out still as to what color carpet and such but am looking forward to getting project done.

Since last year's introduction of our Free Trial Memberships (see pg. 3), we have gained eleven new members whom we can teach and inspire in the joys and excitement of model railroading. The program has been a great success, and we look forward to gaining additional new members in the months ahead. We are looking for both the passionate model railroader and the person who has never modeled anything or never owned a model train. The Senior Membership has been expanded to include the applicant's spouse/significant other and all children under 18, living in the same household. Our GSMRM Membership has been changed to an annual museum pass for the same price. This change means our guests who desire pass privileges will no longer be bothered by GSMRM elections and special meetings. We have made discount admissions coupons available through the Contra Costa and Alameda County Libraries, our GSMRM web site, and special Groupons offers. We expect this to significantly increase our visitor count in the future.

We are near complete with our landscaping project out front. As you can see in the article below, it includes a raised flower bed, repositioning of the propane tank, an access way for future repairs of the sewer system if needed, and flower beds sprawling out through the fence all the way to the railroad tracks between the fence and the street. Hopefully, we will be adding a raised area around the picnic area with possibly of adding another table for members and guest to use. Thanks to all who worked on making our grounds more appealing.

In the months to come we will be working with Parks District on a new lease. They are asking for a few changes which we expect to have completed soon. Also the EBMES is reviewing and rewriting its bylaws to bring them current with today's laws. After these are completed and accepted by members, we will then start on revising GSMRM bylaws.

Finally, I am really satisfied with how well the boards have worked together to hammer out some tough decisions this last year and I look forward to continue working with the board and general members this coming year. Remember, we are here to have fun and enjoy model railroading! -- *Randy Smith, GSMRM General Manager*

SPRING CLEANUP, POTLUCK AND BBQ

As usual, the GSMRM members took a break from winter layout work on March 17th to do the yearly spring cleanup of the outdoor parking and landscape areas. This year we concentrated on cleaning the back storage areas and layouts. Under coordination of



March Potluck and BBQ
—photo by Walt Freedman.

Floyd McCarty and many volunteers, and Randy Smith on the BBQ, we finished the day with another excellent tri-tip BBQ and potluck lunch with plenty of food for everyone. Thanks to everyone who contributed to this event. -- *ed.*



March Potluck and BBQ
—photo by Walt Freedman.

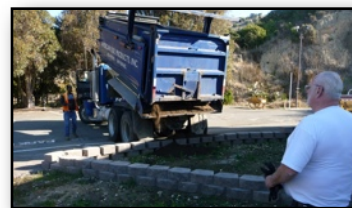
FRONT LANDSCAPE PROJECT PROGRESSING

After preliminary work last year, the GSMRM Landscaping workforce continued work on the front landscape areas this winter into spring. Randy Smith, with assistance from Phil Figel, Don Flores and others built a new pad for the propane tank, installed



Randy Smith, Don Flores, Phil Figel pouring propane base. JoLynn Smith supervising, 5 Nov 2011.
— photos from Jeff Rowe collection.

over 30 yds. of topsoil, and \$600 of plants. Work will continue this summer with the installation of sprinklers and additional topsoil outside the fence. New outside signs were also ordered and installed this



Front landscape work underway, 28 Dec 2011.

spring. Future work includes the areas behind the parking lot, the BBQ area across from the kitchen, the front parking lot area.-- *ed.*



Front landscape work completed, March, 2012.

O SCALE

During Winter 2012, the O Scale group completed work on three major projects. Following the work started last Fall in the Pt. Richmond town area, when the town underlayment area was elevated to allow the trolley line to be at pavement level, the streets and sidewalks in the town areas were added. Street lights, signals and figures and many small details were also added to give a very nice appearance. During our winter work days, we covered the south mountain extension with plaster cloth and a layer of plaster. It is now ready for rock castings which will take the remainder of the year to complete.



The south mountain after the Sat 4 March workday. Just about the entire O Scale team contributed, including Bob Brown, Josh Carpoft, Harry Critchfield, Rob Fassano, John Engel, Jeff Heller, Mark Francis, Andy Olson, and Jeff Rowe.

--photos by Jeff Rowe

Finally, we rebuilt the Arrival east yard ladder with number eight turnouts to match the other yard ladders and insure better tracking through the yard. A couple of additional yard stub tracks were added for way freight storage. Relay boards were added to the Midway panel for automatic route setting of the west and east ladders. A new electrical circuit was added for the computer area and the OSCI computer was installed and updated for the latest version of JMRI and OSCI. The panels were redone using the Layout Editor which will allow automatic dispatching and train operation.

The video switch back panel was made more accessible and all the camera inputs relabeled to relate to actual position and direction of view. We also entertained the O Scale West visitors in February. Lastly, we spent our March cleanup day doing a thorough floor cleaning of the entire layout area.



The rebuilt Arrival East lead. Turnouts by Andy Olson, Jeff Rowe. Installed and wired by Rowe, with support from Bob Brown and Mark Francis. Two additional yards tracks were added (upper left) for way freight and RIP storage.

On the Eureka & Empire On3 layout, work progressed on the lower Eureka yard, scenery and building additions. A custom built rock plant was added before the Eureka yard area. A NCE DCC system was installed and testing is underway.

On the Interurban line, an automatic reverse loop module was added to the Barstow loop so trains can be looped without operator intervention. Wiring of the control panel for the Churchill yard area and interchange to SFW continues.

The O scale public and member web sites:
http://www.gsmrm.org/o_scale/index.shtml
http://www.gsmrm.org/members/o_scale/. --Jeff Rowe, O Scale Trainmaster.

HO SCALE

At the end of the 2011 run season, the HO scale members voted to proceed on an ambitious list of projects. This included some small projects such as the repair of the 16th. St. trolley centenary wires by Phil Gale and Al Klumpp replacing broken or missing telephone poles around the layout. It also included some more long-term projects to improve the railroad such as the Niles S.P. track realignment project and the Decoto station track repair by Morgan Denegree with help from Paul Culhane and scenery work by Rich Bass.

Many projects already in process also received attention this off-season including the WP yard expansion by Jeff Robinson with track weathering by Ed Slintak and ballasting by Floyd McCarty. Jeff has also been busy working on plans for possible changes to the Wood Street area of the layout. John Barrella has moved ahead on the dispatch tower remodel and Paul Culhane is pushing ahead on the Dixon switching area.

Our biggest off-season project is the Chubb Phase II cutover. Chubb is the computer-controlled system of distributing track power, controlling turnouts and operating signals. Upon completion of this phase, Chubb will control the layout from Sacramento to West Shoppside cross-over near the Oakland wye. John Morrison and Phil Figel have been working since before the end of the 2011 run season on this project and have lots of works still ahead of them.

Walt Freedman is continuing to develop and expand the DCC system throughout the layout with some construction help from Bill Bigley.

Dave Illich and Bob Siemsen have supported several projects by supplying 110 VAC service where necessary.

HO scale is fortunate to have an active roster of members who are willing to give generously of their time and talents. We look forward to seeing you at GSMRM and answering any questions you might have.

-- Bob Siemsen, HO Scale Trainmaster

N SCALE

We have replaced our computer (which has been replaced 5 times due to the "wonderful" conditions in the dispatcher rm.) with a new and easier to use large screen windows type, so I hope it lasts a bit longer than the others. The track detection has come a long way this season, a little over half our layout is now able to tell us on the computer where our trains are. Also, we have new signals on the same amount of layout that we can control with the computer.

Thanks to one of our new members who likes to wire things, one of the sections of track (Elk Grove) that was out of operation for three years due to the addition of a stub track for one end of the Bakersfield Yard, is now back in operation. Little bits of track work here and there, repairing the scenery, lots of cleaning track, and we're back in operation. If you look at our narrow gauge section, you'll find that a bit of it has been changed to standard gauge. We're changing it just like the SP did, and eventually, the whole thing will be a branch line from Truckee to Tahoe. --Barry Wilson, N Scale Trainmaster.

SNYDER LAYOUT UP AND RUNNING

The New Jersey Hi-Railers have re-assembled the Snyder layout and have it operating. The June/July 2012 issue of **O Gauge Railroading Magazine** has a 9 page article and lots of photo's of the Snyder layout in New Jersey. You can get a video preview at <http://www.ogaugerr.com/>. Golden State receives only nominal reference in the article as most of it highlights history of the Snyder ownership and the NJ Hi-Railers taking over the ownership. See <http://www.ogaugerr.com/>. -- *Jim Dox.*

OUR 2012 THEME DAYS

During the 2011 season we continued with our special theme trains every 4th Sunday of the month. Some of these included Unit Train Day on April 22, Amtrak Day on May 27. Upcoming theme days will be ATSF/BNSF Day on June 2, Steam /Transition Era Day on July 22, UP/ WP Day on August 26, Passenger Day on September 23, Southern Pacific Day on October 28, and concluding with "Foreign To California" Day on November 25. At our theme days you can expect to find many trains representing that day's theme. It's a good chance to see your favorite trains in operation. --ed.



"Amtrak" east bound from Midway on the O Scale layout during Passenger theme day. --photo by Martin Jahner

MEMBER ACTIONS 2011-12

EBMES

Dec 2012 Elections:

Dave Clark, Morgan Denegree and **Jeff Robinson** elected Directors for 2-year term 2012/2013. Board voted **Randy Smith** President, **Morgan Denegree** as VP, **Dave Clark** as Secretary, and **Walt Freedman** as Treasurer.

Trainmasters for 2012: N Scale - **Barry Wilson**; HO Scale - **Bob Siemsen**; O Scale - **Jeff Rowe**.

Other member actions:

Aug 2011: **Josh Carpoif** approved for trial membership in O scale; **David Proud** discontinues his trail membership; **Robin Graham** granted leave of absence.

Oct 2011: **Brad** and **Alex Paul** approved for trial membership in N scale; **Dave Smith** granted leave of absence; **John Engel** approved for trial membership in O scale.

Nov 2011: **John Barrella** approved for trial membership in HO scale; **Josh Carpoif** voted to Senior membership O Scale.

Dec 2011: **Jim Dox** on leave of absence.

BeAll King approved for trial membership in HO scale; **Paul Culhane** approved for trial membership in HO scale .

Feb 2012: **John Sebastian** approved for trial membership in N scale.

April 2012: **John Engel** (O) and **Paul Culhane** (HO) voted to Senior membership;

Sean Bartlett and **Julie Pierce** approved for trial memberships in HO scale

June 2012: **John Barrella** voted to Senior HO; **Bob O'Neill** (HO) approved for trial membership.

GSMRM

This May, the following were elected as directors for 2012/13 period: **Jim Ambrose, Bill Bigley, Morgan Denegree, Walt Freedman, Phil Figel, Larry Price, and Randy Smith.**

GSMRM Officers for 2011/12: General manager - **Randy Smith**; Asst. GM - **John Morrison**; Treasurer/CFO - **Frank Greman**; Secretary - **Jim Ambrose**; House & Grounds - **Bill Bigley** and **Bob Siemsen**; Publicity - **Sean Dexter** and **Morgan Denegree**; Saturday and PIC Coordinator - **Bob Siemsen**; Membership Secretary - **Walt Freedman**; Store Manager - **Floyd McCarty.**

Nov 2011: **Walt Freedman** appointed acting secretary March 2012: **John Sunkel** voted to Honorary membership. Taking over financial duties from CFO **Frank Greman** will be **Phil Figel** CFO, **John Fagan** assistant CFO and **Walt Freedman** as dues manager.

Thanks to retiring board members for their service and congratulations to the new officers and members and for their acceptance of the Board and member responsibilities.-- ed.

FREE MEMBERSHIP

We offer a Free Trial Membership in one of the three scales (N, HO, O) for those interested in becoming full members. The trial period lasts up to six months and lets us get to know each other and see if there is a mutual fit. The Trial Membership can be terminated at any time, if proven to be unsatisfactory. We are looking for enthusiastic members who want to contribute to the club's and scales's activities, so regular participation is important during the trial period. -- *Morgan, EBMES Vice President*

WEBSITE NEWS

After attending a free seminar on web design hosted by Contra Costa County Small Business Development Center (SBDC), we undertook a major revamp of our website to make it more user-friendly. Several long pages were divided into smaller bites so that visitors now get a single screen view without having to page down. Content was updated and some photographs refreshed with new scenes. Several new features were added to the Home Page: a Google search function for the website, a discount coupon for visitors and railroad history content for children that has received compliments from teachers as far afield as the East Coast. We have been gratified by the increase in traffic and inquiries resulting from that effort. -- *Walt Freedman.*



ARE YOU ONLINE?

In order to keep up with the times, the museum is now also present on some of the popular social networks: Facebook and Twitter. We also have a channel on YouTube. Take a look:

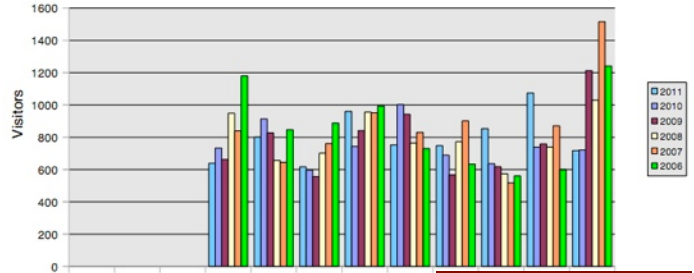
- <http://www.facebook.com/pages/Point-Richmond-CA-Golden-State-Model-Railroad-Museum/165356379874>
- <http://twitter.com/gsmrm/>
- <http://www.youtube.com/gsmrm/>

Please follow us on Twitter, become a fan on Facebook, so you'll always be informed about upcoming events, and you can see the latest pictures as soon as we post them!

-- Martin Jahner, Walt Freedman Web coordinators; Joel Frangquist Facebook contact.



VISITOR STATISTICS AS OF FEB 2012



The Zephyr editor published an article *Trains at the GSMRM*, in the Oct 2011 issue of *Marketplace Magazine*. Check GSMRM website http://www.gsmrm.org/media/cc_gsmrm_20110.pdf for PDF file.



Calendar April-Dec

Museum open:
Saturdays: 12 noon - 5 pm for viewing, no trains running. Free admission
Sundays: 12 noon to 5 pm with operating trains. Admission charged.
Wednesdays: 11 am - 3 pm for viewing only, no trains running. Free admission.
December: Open Sat and Sun 12 noon - 5 pm, trains running. Admission charged.
 Check for latest info at <http://www.gsmrm.org>

Looking Back...

We recently received a back issue of *The Zephyr* and several issues of *Clinkers & Sparks* from Robin Graham. You can view these historic issues at <http://www.gsmrm.org/zephyr/index.shtml>. If you have or know about other older issues of these publications, please contact us.

CLINKERS & SPARKS

VOLUME 1 DECEMBER 16, 1988 NUMBER 1

1988

ELECTION RESULTS

The East Bay Model Engineers Annual Business Meeting was held Friday, December 2, 1988. The major order of business was the election of officers for the next year. The election was actually quite docile with almost every candidate running without opposition.

The results of the election follow:

President--Ed Slintak
 Vice Pres--Paul Soito
 Secretary--John Morrison
 Treasurer--Luke Coustler
 Dir. 2 year--Tom Barrett
 Dir. 1 year--Michael Coustler

Scale Leaders:
 'N Scale--Ray Deblieck, Trainmaster
 'HO Scale--Rick Blake, Trainmaster
 'O Scale--Ed Marshall, Trainmaster
 Robin Graham, Ass't Trainmaster

Good luck gentlemen!

TEMPUS FUGIT

Here we are at the end of 1988 and at the end of a long wait for the beginning of construction of our new layouts. We have managed to come through a long period of time pretty much intact. Membership is down slightly from the Halleck days, but the majority of members hail from those days past.

We are fortunate indeed to be looking forward to the construction of layouts using state of the art methods and materials in a building with a brand new roof. Remember the roof at Halleck Street? Remember the floor? How about the walls? It is amazing how memories fade over time. Remember the winter storms of 1957 and 1964? We almost floated away. Remember the Visqueen parties? Remember the frequently voiced: "I move we have donuts at seven-thirty". Remember the marathon meetings starting at 10:00 p.m. and winding up the next morning at 1:00 a.m. or later? Remember the Board Meetings in the postage stamp size office? Remember the clouds of cigar, pipe and cigarette smoke? Remember the Silver Bridge? Remember the friendships developed over the years? Remember the great feast after the "Big Show"? Traditions, memories, friendships, that is what EBMES is all about. The glue that holds it all together of course is our common interest in model railroading, but the club is more than model railroading. It's working together, sharing ideas, dreaming, planning, building, holding on to the traditions of our past, moving forward together into the future. We have come a long way from the group that met in Graham Hardy's Bookstore over fifty-five years ago. I trust the charter members would be very pleased to see that EBMES is alive and well in 1988.

Gentlemen the future is bright. It is a pleasure to be associated with all of you. Happy holidays to you and your families.

MAKING SAWDUST FLY

A great deal of progress has been made since mid-November in construction of the stud walls and the public walkway. The warehouse has been a beehive of activity on Friday evenings. It really is great to see teams of members working on the projects which must be finished before we can move into the actual construction of layouts. Evidence of how team work can pay off, can readily be seen in how quickly things have come together in just about three Friday evenings of concerted effort by just a few willing hands.

Spread the word. We are "making sawdust fly" at EBMES. 1989 will be great...

MATERIAL NEEDED FOR PUBLICATION
 Deadline for copy to be considered for publication is the third Friday of the month. Place copy in Editors Box in office.

Contributors

Morgan Denegree
 HO Scale Train Master, EBMES V.P. Member since 2009.

Walt Freedman
 EBMES treasurer, GSMRM membership secretary, Web Coordinator. Member since 1998.

Jeff Rowe
 O Scale Train Master and Zephyr editor. Member since 2001.

Bob Siemsen
 HO Scale Train Master. Member since 2009

Randy Smith
 GSMRM General Manager, EBMES President. Member since 2006.

Barry Wilson
 N Scale Train Master. Member since 2002.

Golden State Model Railroad Museum
ATTN: Zephyr
 P.O. Box 71244
 Point Richmond, CA 94807-1244

Editor	Jeff Rowe
Associate Editor	Walt Freedman
Contributing Editors	
GSMRM General Mgr.	Randy Smith
EBMES President	Randy Smith
EBMES V.P.	Morgan Denegree
O Scale Train Master	Jeff Rowe
On3	Jim Ambrose
HO Scale Train Master	Bob Siemsen
N Scale Train Master	Barry Wilson
Email	zephyr@gsmrm.org
Website	www.gsmrm.org

Produced with Apple Pages '09 ver. 4.1.

© 2012 Golden State Model Railroad Museum. The contents of this publication may not be reproduced either in whole or in part without written permission of GSMRM. GSMRM is not responsible for the opinions expressed by its contributing editors or authors.